

# ESRI® and Microsoft®

## Giving You the Power to Think and Plan Geographically

Organizations around the world are leveraging their IT investments by implementing mapping and geographic information system (GIS) technology. GIS can integrate and analyze any data that has a spatial component, regardless of the source of the data.

Businesses can go beyond traditional data analysis with GIS. The combination of ESRI® and Microsoft® platforms provides rapid data creation, authoring, and mining and live data analysis, visualized in easy-to-use enterprise applications.

GIS provides essential information tools to allow enterprise organizations to

- Make informed decisions.
- Improve communication.
- Increase efficiency.
- Know where, when, why, and how to take action.
- Share knowledge with others.

[www.esri.com/microsoft](http://www.esri.com/microsoft)



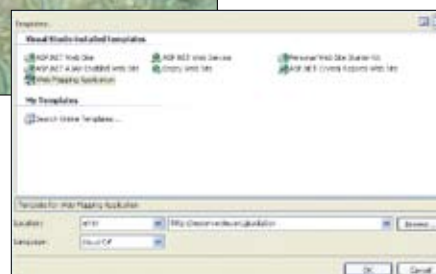
*ESRI's ArcGIS Server running on Windows Server gives end users throughout the enterprise access to easy-to-use applications that perform sophisticated business analysis such as this utility network trace.*



*Models and tools can be published using ESRI's ArcGIS Server and accessed via desktop, mobile, and browser clients running on Windows® such as this obstruction analysis.*



*ESRI enhances your Visual Studio development effort with a broad suite wizards and custom tools.*



### Windows Server 2008

ArcGIS® Server from ESRI is a complete server-based GIS that leverages the power of Windows Server®. It comes out of the box with end-user applications and services for spatial data management, visualization, and analysis.

### SQL Server 2008

ESRI offers a complete suite of geospatial software solutions that can operate as clients to SQL Server® 2008. SQL access to spatial features stored in SQL Server 2008, combined with ESRI's extensive geodata management capabilities, will provide customers with the tools they need to seamlessly consume, use, and extend location-based analysis for enterprise-scale computing and Web collaboration.

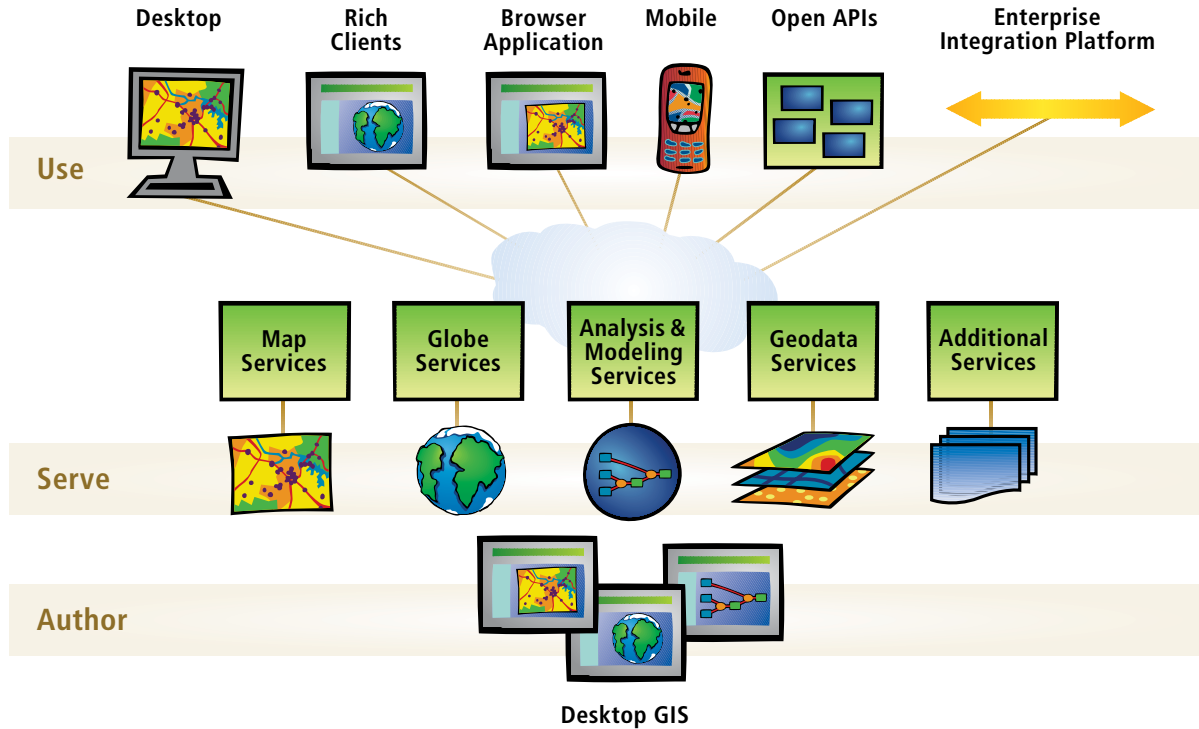
### Visual Studio 2008

ESRI provides a series of .NET developer kits for creating custom server, desktop, Web, and mobile GIS applications. Visual Studio® 2008 developer resources include an integrated help system, samples, snippets, Web and Windows controls, and project templates.

# ArcGIS®

## The Complete Geographic Information System

ESRI® ArcGIS is an integrated family of software products that consists of Desktop GIS, Server GIS, Mobile GIS, and Online GIS. ArcGIS is a platform for building a complete GIS that lets you easily author data, maps, globes, and models on the desktop; serve them to a GIS server; and use them on the desktop, on the Web, or in the field.



*Interoperable, open, and standards based, ArcGIS provides an enterprise system for authoring, serving, and using geographic knowledge.*

With annual sales of more than \$660 million, ESRI remains the world leader in the GIS software industry. Our business involves the development and support of GIS software for all types of organizations. ESRI is the leading GIS vendor providing a complete suite of geospatial software solutions that can work as clients to the SQL Server 2008 Spatial extensions. ESRI applications, running on more than one million Windows desktops and millions of Web and Windows servers, provide the backbone for the world's mapping and spatial analysis.



ESRI  
380 New York St.  
Redlands, CA 92373  
909-793-2853  
[www.esri.com/microsoft](http://www.esri.com/microsoft)

**Microsoft®**  
**GOLD CERTIFIED**  
*Partner*

Copyright © 2008 ESRI. All rights reserved. ESRI, the ESRI globe logo, ArcGIS, and [www.esri.com](http://www.esri.com) are trademarks, registered trademarks, or service marks of ESRI in the United States, the European Community, or certain other jurisdictions. Other companies and products mentioned herein may be trademarks or registered trademarks of their respective trademark owners.